

CO₂ Fractional Laser

Model: O30-BS

FEATURES AND ADVANTAGES

- *Independently developed TEM₀₀ mode laser tube (patented)*
- *Magic, Single, Repeat pulse and CW. operation modes*
- *Fractional laser (scanner) technology*
- *Discrete scanning technology*
- *Smart variable treatment graphics*
- *Power-on self-test, automatic failure alarm and diagnosis*

Features of CO₂ Fractional Laser

Fractional laser treatment works by targeting both the epidermis and dermis. It does this by delivering a laser beam that is divided into thousands of tiny but deep columns of treatment into the skin. These are called microthermal treatment zones (MTZs). Within each MTZ old epidermal pigmented cells are expelled and penetration of collagen in the dermis causes a reaction that leads to collagen remodeling and new collagen formation. By using MTZs, the laser targets and treats intensively within the zone whilst surrounding healthy tissue remain intact and unaffected. This fractional treatment results in a faster healing process than if all tissue in the treatment area was exposed to the laser.

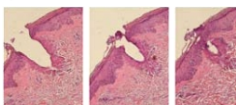
Fractional laser treatment can be used on any part of the body. It is usually used for the treatment of facial lines and wrinkles (rhytides) and skin pigmentation associated with photoaging, surgical and acne scarring, and chloasma.

CO₂ laser has good function of epidermis gasification, which is effective to epidermis resurfacing and the penetrability of CO₂ laser is deeper than that of Er:YAG Laser, the thermal stimulation is stronger, so CO₂ laser is the best choice for fractional laser treatment.

Magic Pulse: High energy, Short Pulse

- Ablates tissue quickly and provides hemostasis
- Delivers four times more energy per pulse than the super-pulse laser
- Results in more new collagen formation than the super-pulse laser

Immediate Volume Reduction



Each laser pulse ablates a column of tissue causing volumetric skin reduction. The ablation removes surface discolorations and deposits heat deep in the dermis. The deep heating causes immediate collagen contraction and long-term collagen remodeling.



Easy to Operate

The scanner is applicable for laser surgery, the doctor who operates the scanner is not required to have a complicate training course for operating steps. Instead, the doctor only need to select the figure of treatment, then set up the most basic parameter and then start the treatment. The operation of scanner is easy and humanized, so the doctor could serve the patient more intently.

Variable Treatment Graphics

Adjustable shapes, sizes and spacing

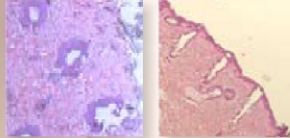


Discrete Scanning Technology

Discrete scanning means to scan out the selected figure randomly. When the laser beam radiates on the skin, heat will accumulate and may injure the surrounding normal tissue. Discrete scanning could help to release heat as quickly as possible and reduce the unwanted thermal effects to the greatest extent.

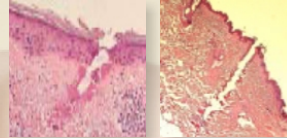
Customizable Treatment

Customized Coverage
5-100% ablation

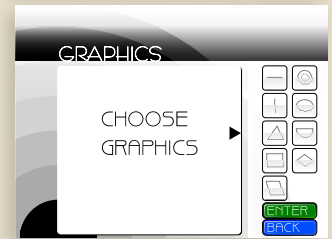
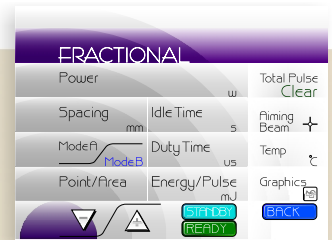


Customize treatments for each patient based on their indication and needs by selecting the density of tissue treated. Only the Magic Pulse gives the flexibility of 5-100% coverage in a single pass.

Customized Depth
50-2000 um

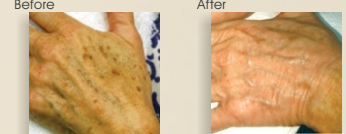


Target dyschromia, fine lines, deep wrinkles and scars by choosing the depth of ablation.



Clinical Case Studies

Freckles / Spots Removal



SCAR



Wrinkle Removal



030-B (Fractional Laser) Scanner Technical Specification

| | |
|------------------------|---|
| Wavelengths | 10.6microns |
| Mode Structure | TEM ₀₀ |
| Power to tissue | 30W |
| Magic pulse peak power | 500W |
| Laser operation modes | Fractional, Magic, Single, Repeat Pulse & CW. |
| Aiming beam | 3mW Diode |
| Beam delivery system | 7-joint spring-balanced articulated arm |
| Working radius | 130cm |
| Cooling system | Water closed-cycle |
| Control system | LCD touch screen, footswitch |
| Warranty | 1 year |
| Electrical | 230VAC/50Hz or 120VAC/60Hz |
| Package dimensions | 128x57x85cm ³ |
| Gross weight by carton | 95kg |

Scanner Technical Specification

| | |
|----------------------------|-------------------------------------|
| Dot quantity | 1-10000 dots at most |
| Working mode | Fractional (Magic Pulse Technology) |
| Condenser focus | F=70mm |
| Spot size | Min: 0.15mm at the focus |
| Interval Between 2 Centers | 0.2-2mm |
| Scanner Graphics | Square, rectangle, round or circle |
| Duty time | 100us-10ms (adjustable) |
| Idle time | 0.01-1s |
| Treatment Size | 20x20mm ² (adjustable) |
| Net weight | 0.5kg |

Company Introduction

Shanghai Jue Hua Laser Technology Development Co., Ltd is a civilian high-tech corporation major in the research, development, production, sales and service of laser and opto-electronics products. It was founded on 2003 and now has a group of professional specialists devoting in the laser technology researching. CO₂ laser surgical system (CE Marked) is one of the main products of the company. Its power supply, tube, program are all self-developed and the company has become one of the largest CO₂ laser export company in China. Jue Hua is willing to cooperate with domestic and foreign companies to contribute to the vigorously developing laser industry together.



Laser Institute of America

Laser Applications and Safety



Представител за България Илан Медицинска Апаратура ООД

София, бул. „Джеймс Баучер“ № 76А, Hill Tower Business Center et. 1, тел. 070017373, www.ilan.bg